



# **Evolution and Success of NIX.CZ**

Tomáš Maršálek  
Director of Association  
NIX.CZ

**MENOG 7**  
**Istanbul, Turkey**  
**20 – 22<sup>nd</sup> October, 2010**



## NIX.CZ history

- First discussions end 1995 (6 Telko offer ISP services)
- Long debates about neutrality
- Big problem to find NEUTRAL place
- Czech Radio TV tower was selected (microwave access)
- Neutral association was established in August 1996
- Next year 15 years Anniversary!
- 1st peering in Jan 1997 on 3COM 10BASET HUB



## Structure

- Association (members), Committee 3 people
- No guarantee, Committee home-working as voluntaries
- Best effort, sometime problems
- 2001 -> TM was asked to move one POP
- 2002 -> TM started as 1st employee
- Rules -> articles of the association and operation rules.
- Still main decisions by members



## Further development

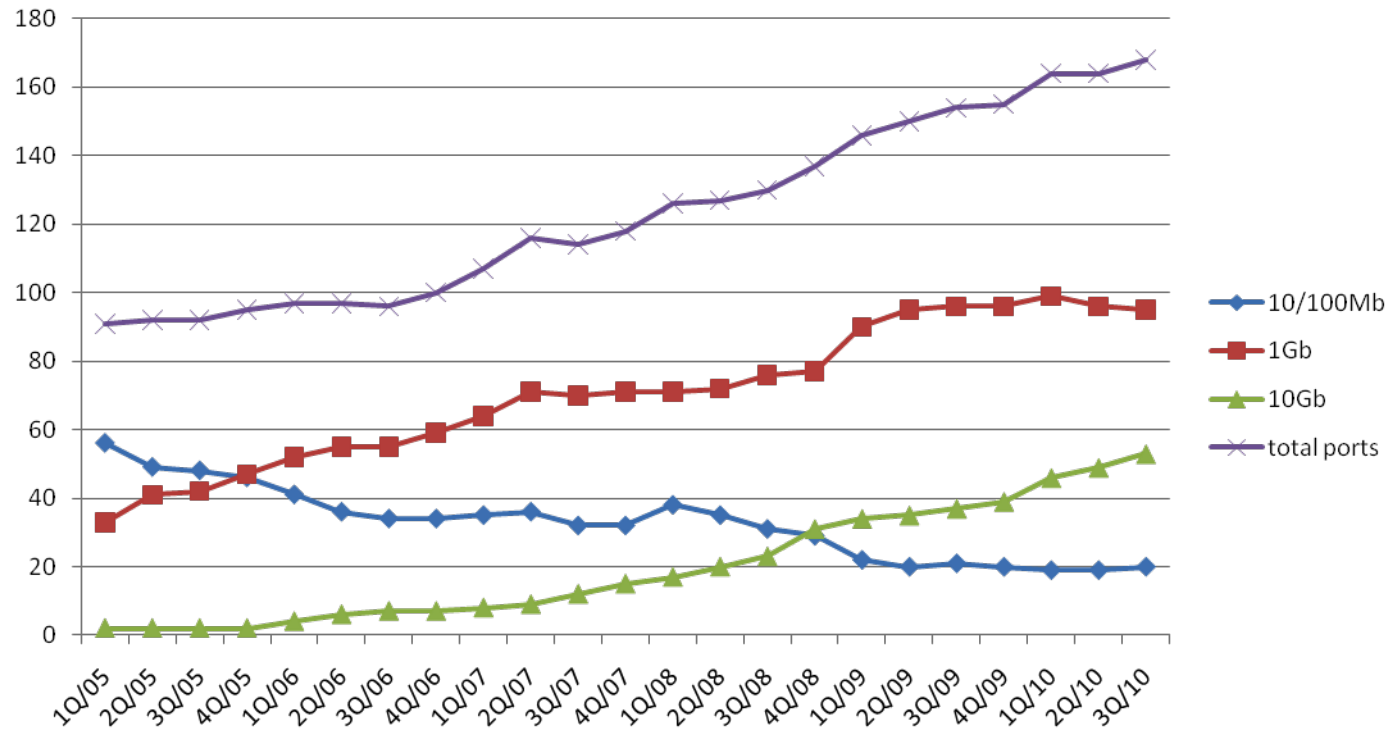
- Association growth -> very unflexible
- We join euro-ix to have another IXP experience, knowledge
- With help of Serge Radovcic, Job Witteman on our GA we start to change current model explaining - nothing is for free
- No flexibility to make decisions with members -> change of articles, but still keep neutrality and members association - just moving tech. operation part to management
- We started hiring staff



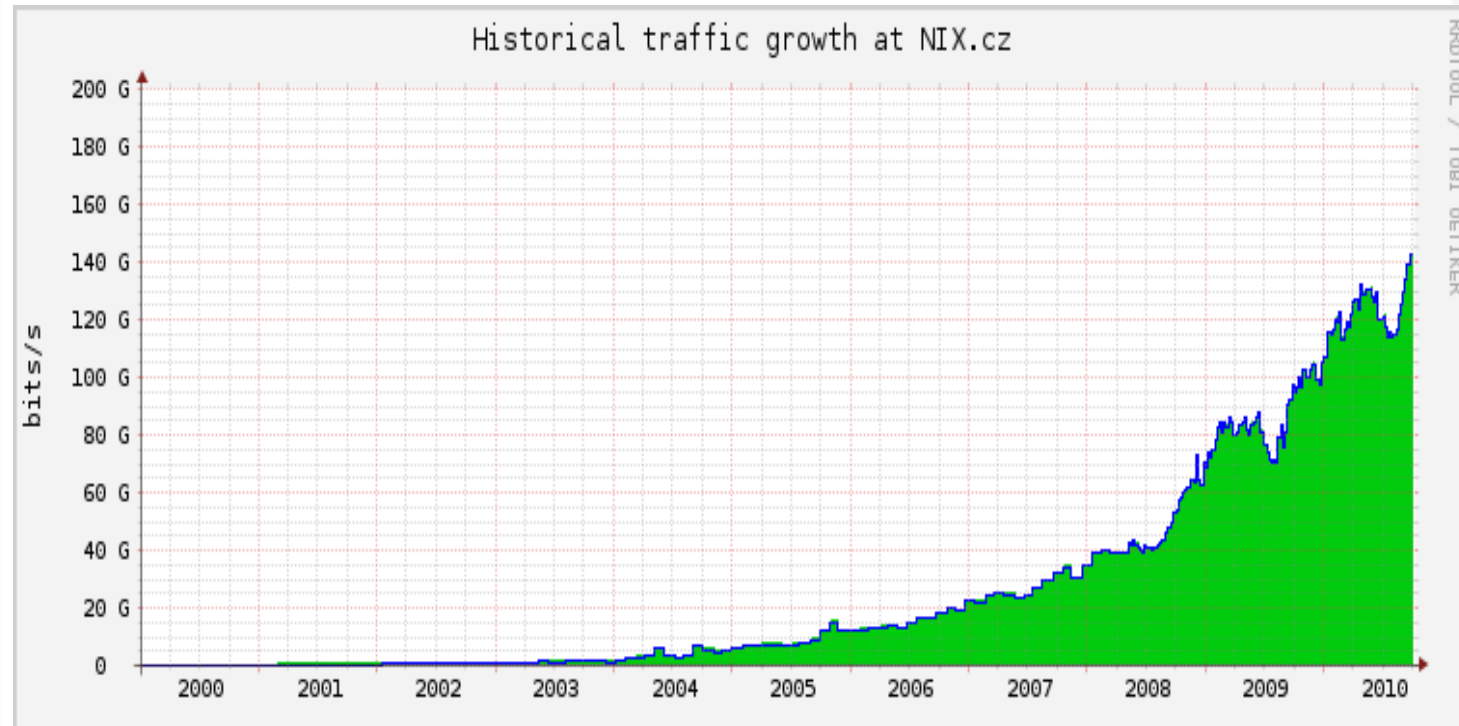
## NIX today

- Participation at other members meetings, International meetings
- International members housing TLDs anycast
- Keeping friendship with other IXP, euro-ix
- 8 employees - 7/24 (2 tech. out of office hours)
- We are in TOP10 in Europe, today No. 7 with 100GB ready platform

# Number of ports



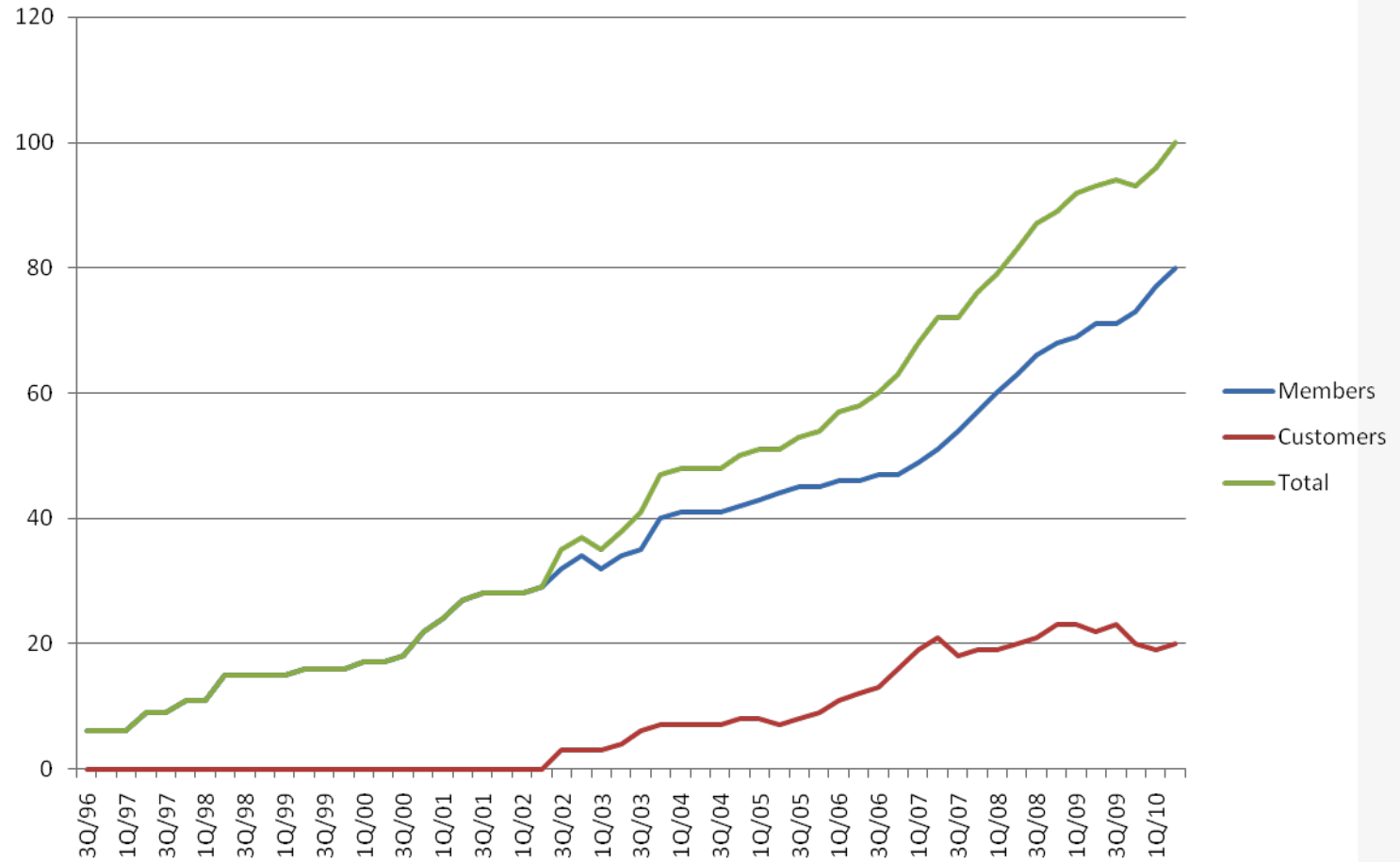
# Traffic growth



**2010 ..... 144 Gbps**  
2009 ..... 100 Gbps  
2006 ..... 10 Gbps  
2002 ..... 1 Gbps  
2000 ..... 100 Mbps  
**1997 ..... 1 Mbps**



# Members and customers







## How to succeed

- Location is important. Fibre cross building
- Better to have association – non profit instead of commercial
- Stable equipment with support
- L2 IXP is like street cross. Stability and 7/24 important
- People, staff.....
- Be careful with rules from start, price list
- Big IXP - critical part of infrastructure
- Listen to members but show and compare



## Possible mistakes

- Loosing time with „Kindergarten“ discussions
- Technical people voting BUT peering is a strategy decision
- Decision about new POPs open/close are still on GA. Should be on management



# Thank you!

- Any questions?
- **tm@nix.cz**

