

RIPE Labs

Operators Tools and Data

MENOG 7, Istanbul, Turkey, 23 October 2010

Mirjam Kühne, RIPE NCC



What is RIPE Labs?

- It is a web site, but more importantly:
 - It is a platform and a tool **for the community**
- You can:
 - Test and evaluate new tools and prototypes
 - Contribute new ideas and research results
 - Provide feedback and discuss with others

<http://labs.ripe.net/>

Currently on RIPE Labs

tagcloud

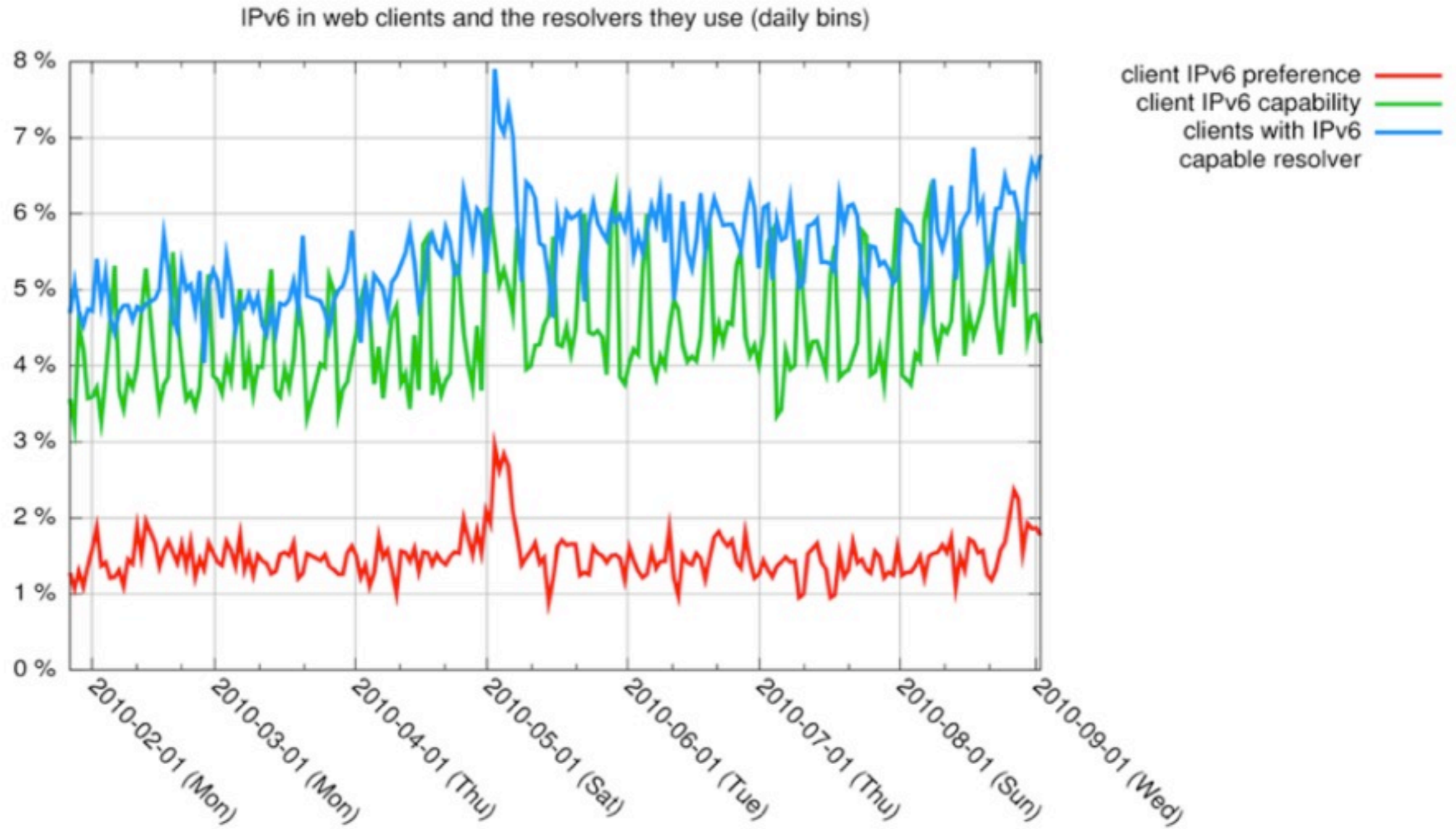
api apnic arin
asns cpe **dns**
dnssec
database
netsense pi **reX** ripe
60 ripe db ripe
meeting **ripe**
ncc ris rpsl
allocation atlas
certification
datarepository
ipv4 **ipv6** ipv6
adoption
measurements
policy
root-servers
routing
statistics
tools

- IPv4 and IPv4 measurements
- DNS and DNSSEC related tools
- RIPE Database API and tools
- Statistics and Measurements
- and much more...

IPv6 at Web Clients and Resolvers

- When people connect to servers, we measure
 - IPv4 capability
 - IPv6 capability
 - IPv4/IPv6 preference
- More resolvers (4.9%) than clients (1.2%) have native IPv6 connectivity
 - Expect to see increase of clients over time
 - We will continue measurements

Accessing www.ripe.net

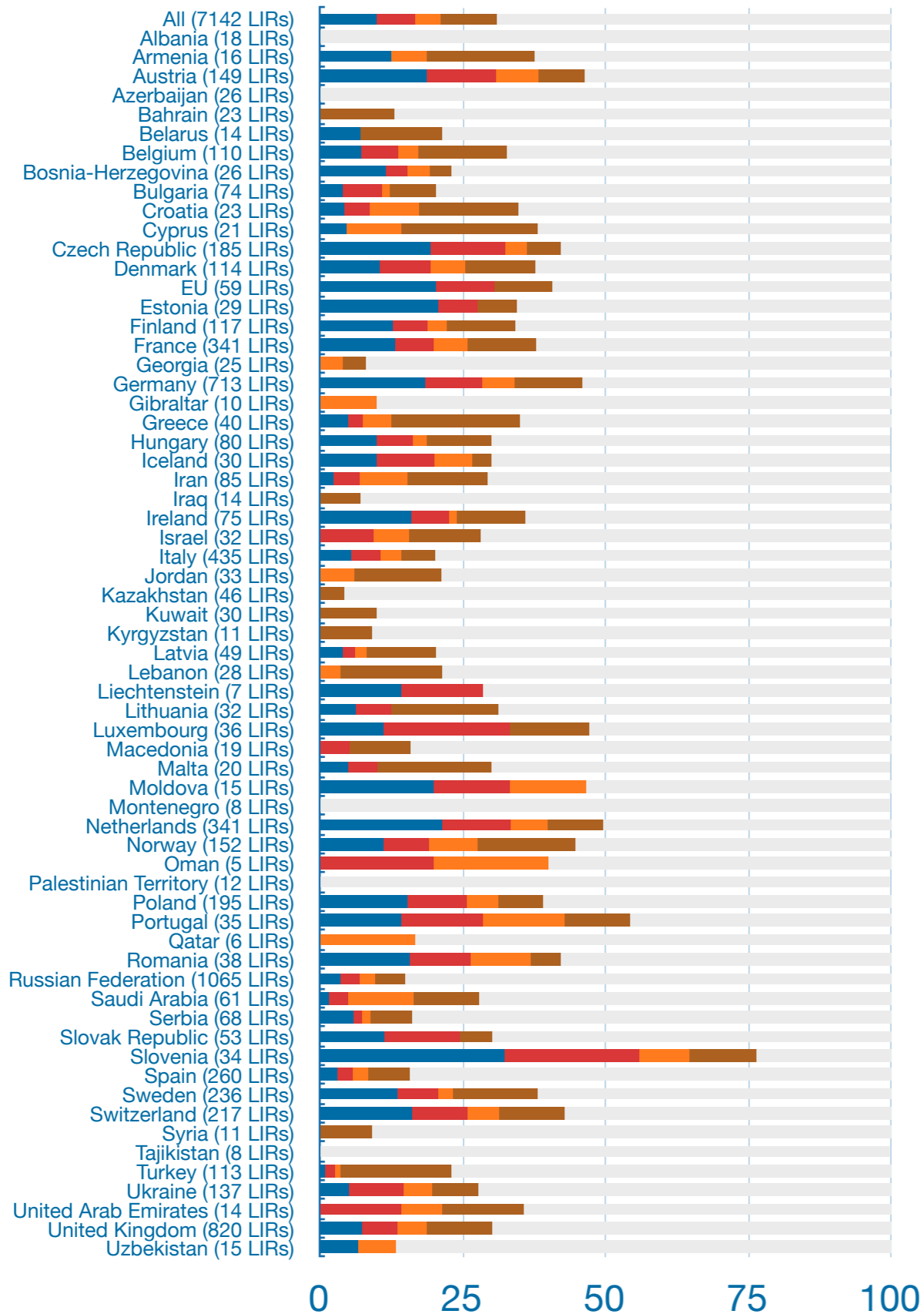


IPv6 Customer Premise Equipment Survey

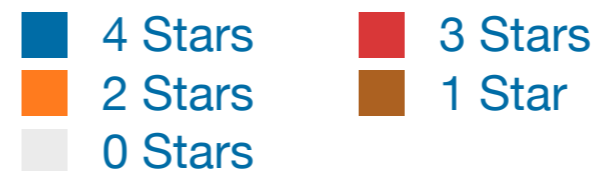
- Survey among CPE vendors
- Results will be updated regularly on RIPE Labs

| | AVM (FRITZ!Box) | Draytek | Zyxel | Juniper (ScreenOS) | Juniper (JUNOS) | Cisco | D-Link |
|--|----------------------------|------------------------------|-----------------------------|-------------------------------|----------------------------|--------------------|--------------------|
| Hardware version required | 7270, 7570 | Vigor 2130 series, vigor 120 | All models released in 2010 | All | All | Most SOHO boxes | Most new boxes |
| Minimum software level required | "Labor" only | 2130:v1.3.0 120:v3.2.4.3 | Per model, check vendor | 6.1 | 10.2 | 12.4T or 15 | see notes |
| Status | Beta | General deployment | Beta | General deployment | Early deployment | General deployment | General deployment |
| WAN layer 2 | | | | | | | |
| Docsis 3.0 | vendor | no | no | no | no | - | - |
| ADSL 2+ | confirmed | 120 only | vendor | confirmed | confirmed | confirmed | no |
| VDSL | confirmed | no | vendor | no | vendor | - | no |
| Ethernet | confirmed | vendor | vendor | confirmed | confirmed | confirmed | confirmed |
| FTTx | - | vendor | vendor | no | no | - | no |
| WAN Layer 3 | | | | | | | |
| PPPoA | confirmed | no | vendor | no | vendor | confirmed | no |
| PPPoE | confirmed | confirmed | vendor | confirmed | confirmed | confirmed | vendor |
| RFC1483/bridge | vendor | no | vendor | no | no | vendor | no |
| RFC1483/routed | - | - | vendor | vendor | vendor | vendor | no |
| Plain IP | - | vendor | vendor | confirmed | confirmed | confirmed | no |

IPv6 RIPEness

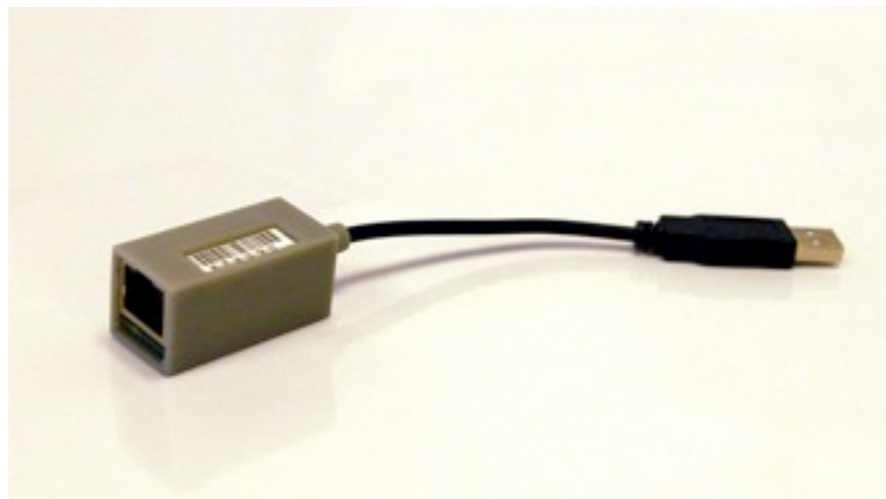


- Only listing countries with 5+ LIRs
- Large variation between countries
- Overall
 - 27% have at least 1 star
 - 73% still have 0 stars



RIPE ATLAS - Active Measurements

- New project to build next generation Internet measurements prototype
- Aim to support 110k (or more) measurement nodes around the Internet
 - can be hosted by ISPs, IXPs, individuals...
- Will be presented at RIPE 61
 - probes will be distributed starting in November



RIPE Database - New API and Tools

- Whois data via RESTful web interface
- RIPE Database queries including search
- Abuse Finder
 - Tool to find all abuse related contact information
- New and Improved Global Registry Service



Routing, Anti-Spam, and more...

- ExaBGP (Thomas Mangin)
 - A new tool to interact with BGP
- BGP Route Origin Validation (David Murray)
- Economic Incentives for Cooperation to fight Spam (John Quarterman)
- Background Radiation in IPv6 (Geoff Huston)
- IPv6 Crawler and Matrix (Olivier Crepin-Leblond)

Recent Improvements

- New website launched recently
- Better navigation and search
 - Tag cloud, life search, long-term project pages
- Easier communication and participation
 - No need to register to leave comments on site
 - Registration only necessary for content submissions and Data Repository

New RIPE Labs Homepage


RIPE NCC RIPE NETWORK COORDINATION CENTRE

Site Search Search

RIPE Labs Mirjam Kühne Log Out My Folder

Home • Users • Data Repository • RIPE Database • About

You are here: Home



RIPE Labs

Innovative Internet tools & ideas

- ✓ Share experience
- ✓ Showcase tools
- ✓ Present research

contents view edit syndication rules sharing display add new...

New contributions

RSS

0 comments **IPv6 CPE Surveys**
Mirjam Kühne — 18 October 2010 10:58

Please find below all previous versions of the IPv6 CPE survey and matrix with the most recent version on top.

» Read more

0 comments **New Release of the Resource Certification System**
Alex Band — 15 October 2010 11:35

tagcloud

api apnic arin
asns cpe dns
dnssec
database
netsense pi rex ripe
60 ripe db ripe
meeting ripe
ncc ris rpsl
allocation atlas

Follow us on Twitter

Subscribe to @mir_ripe_labs

New resource #certification system released (#rpki). Read more details on #RIPELabs: <http://bit.ly/aJVvGI>
15 October 2010 12:17

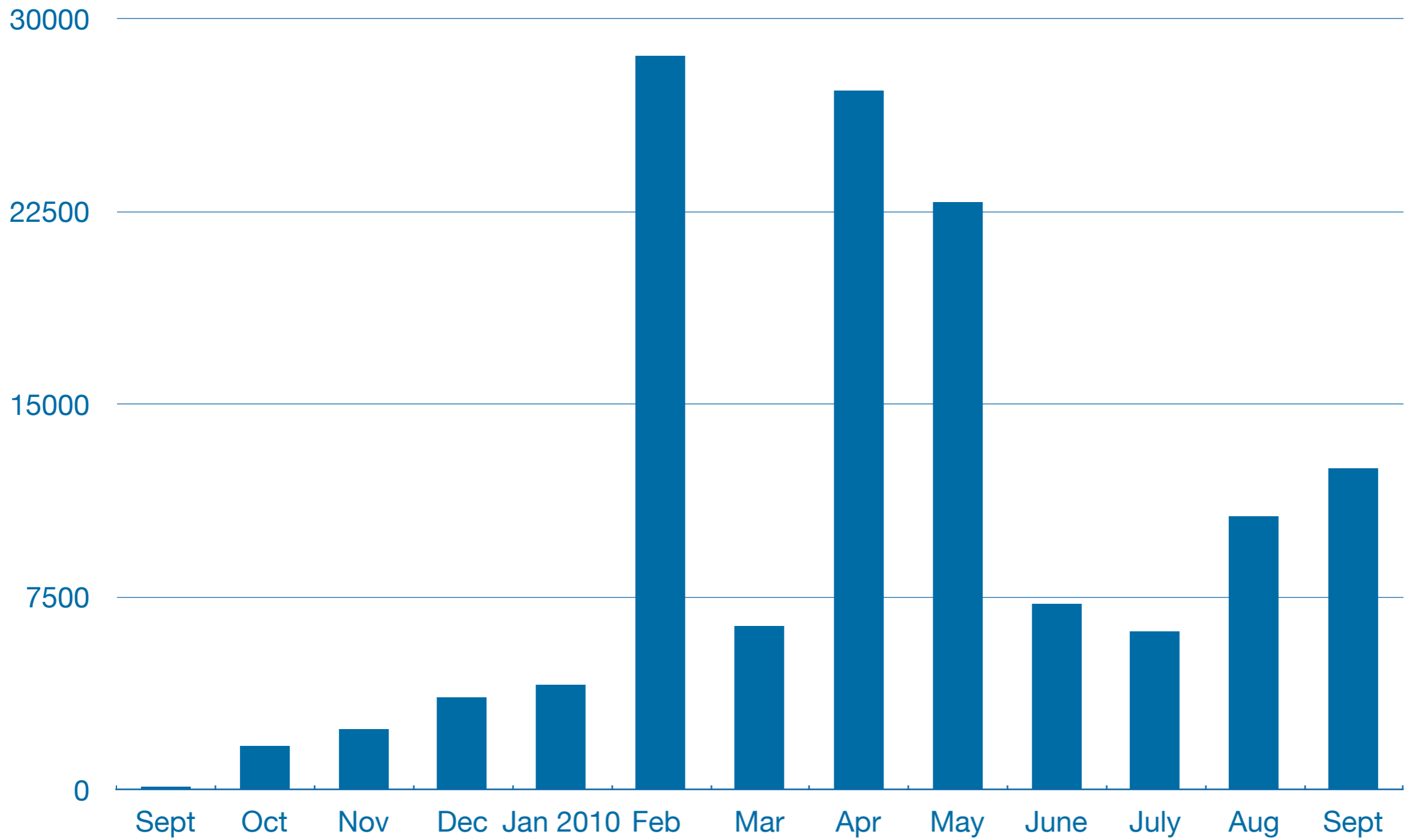
@patrikhson Yes, the addresses are included in the count, but special policy or changes in policy might extend the life-span of IPv4.
12 October 2010 10:25

#RIPELabs graph showing linear decline of IPv4 addresses now on

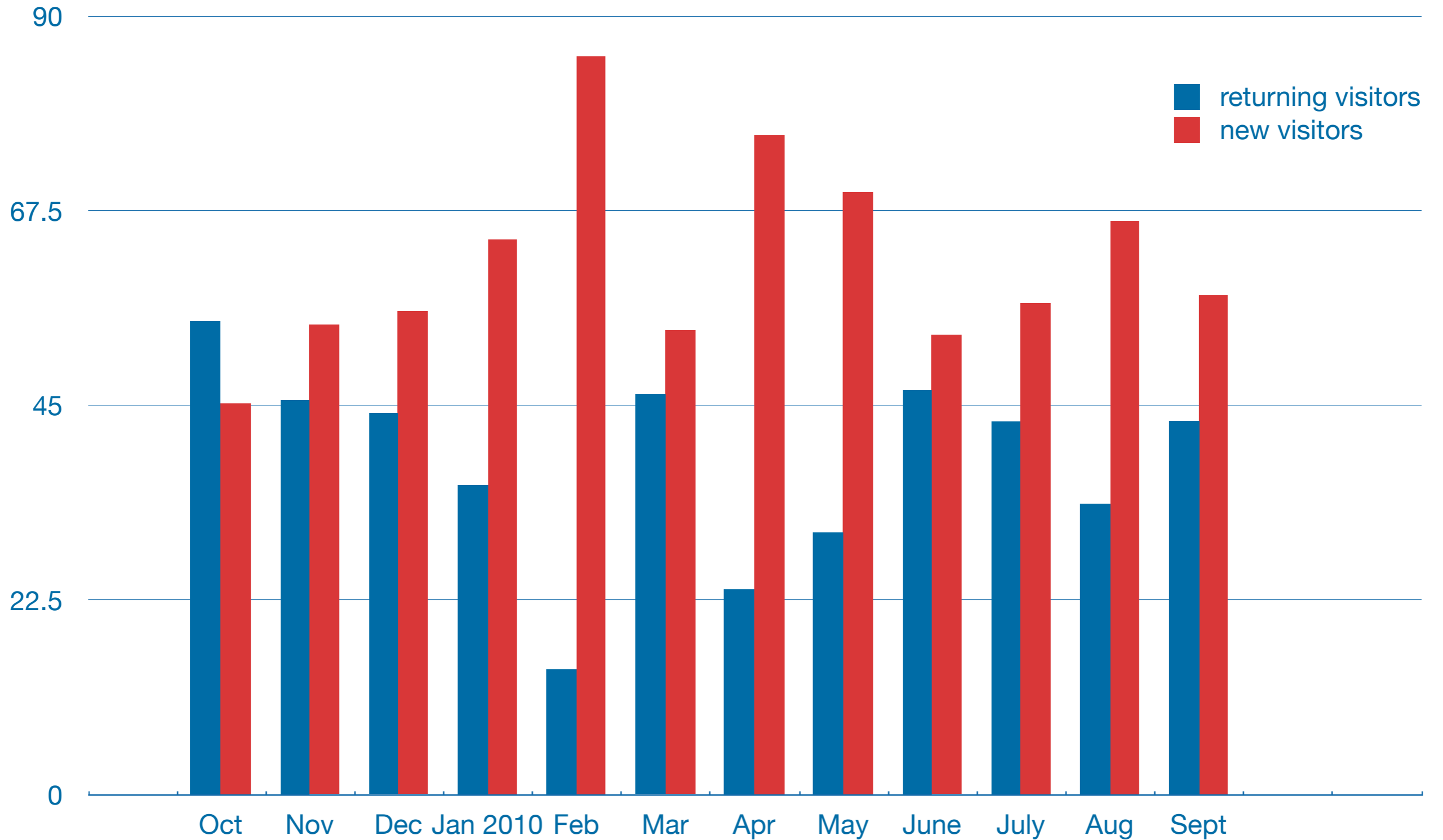
Why RIPE Labs?

- Faster, tight innovation cycle
 - Provide useful prototypes to you earlier
 - Adapt to the changing environment more quickly
- Closer involvement of the community
 - Openness
 - Make feedback and suggestions easier and more effective

Number of Unique Visitors



Returning vs. New Visitors (%)



Suggestion and Questions

- Please take a look and **participate**
- Leave a comment under an article
- Questions and suggestions to labs@ripe.net

<http://labs.ripe.net/>

Questions?

