

Some Internet Data

... and a sneak preview

Istanbul, October 2010

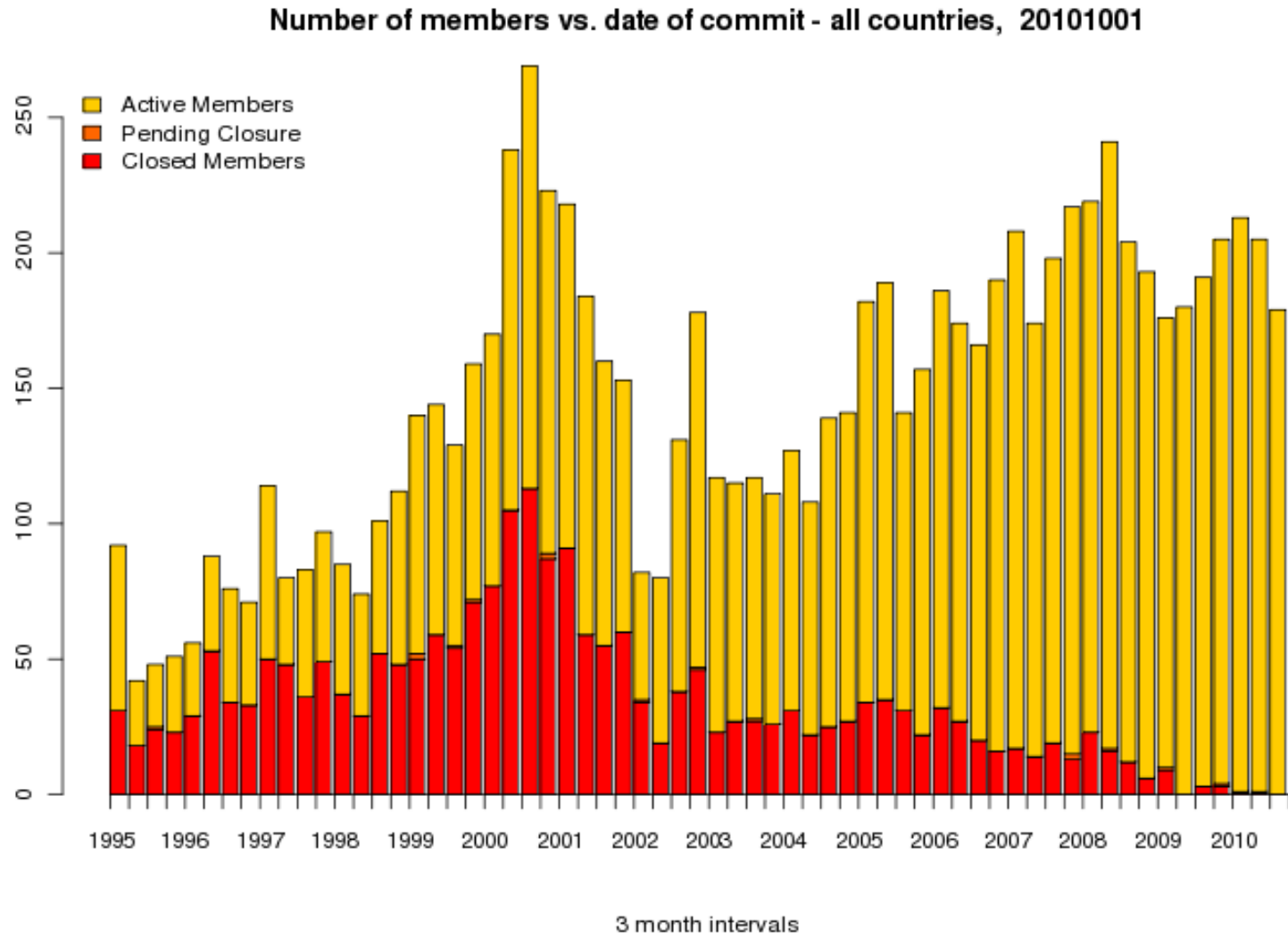
Daniel Karrenberg
Chief Scientist



Questions?
Questions?
Ask !

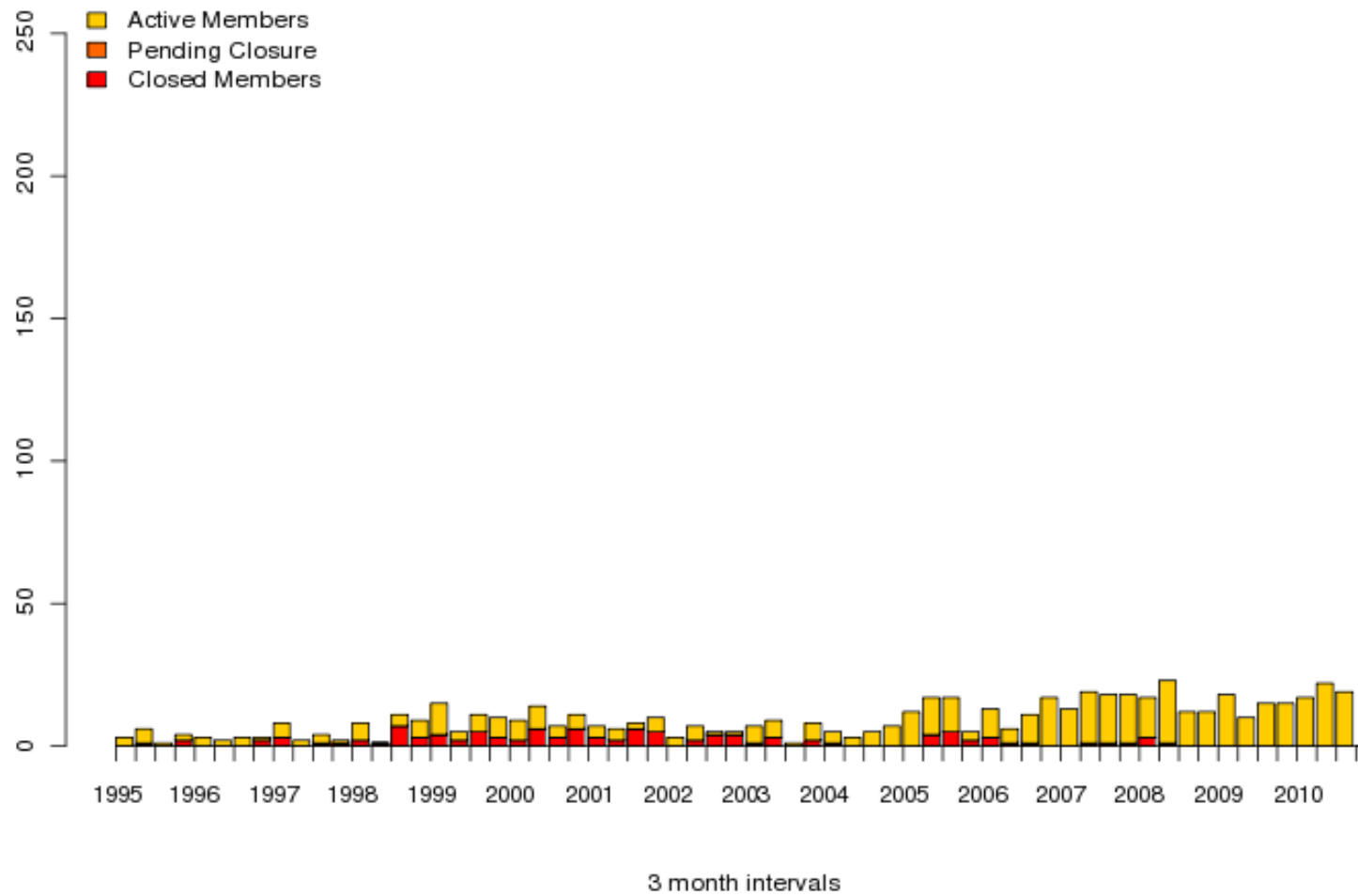


RIPE NCC Membership History

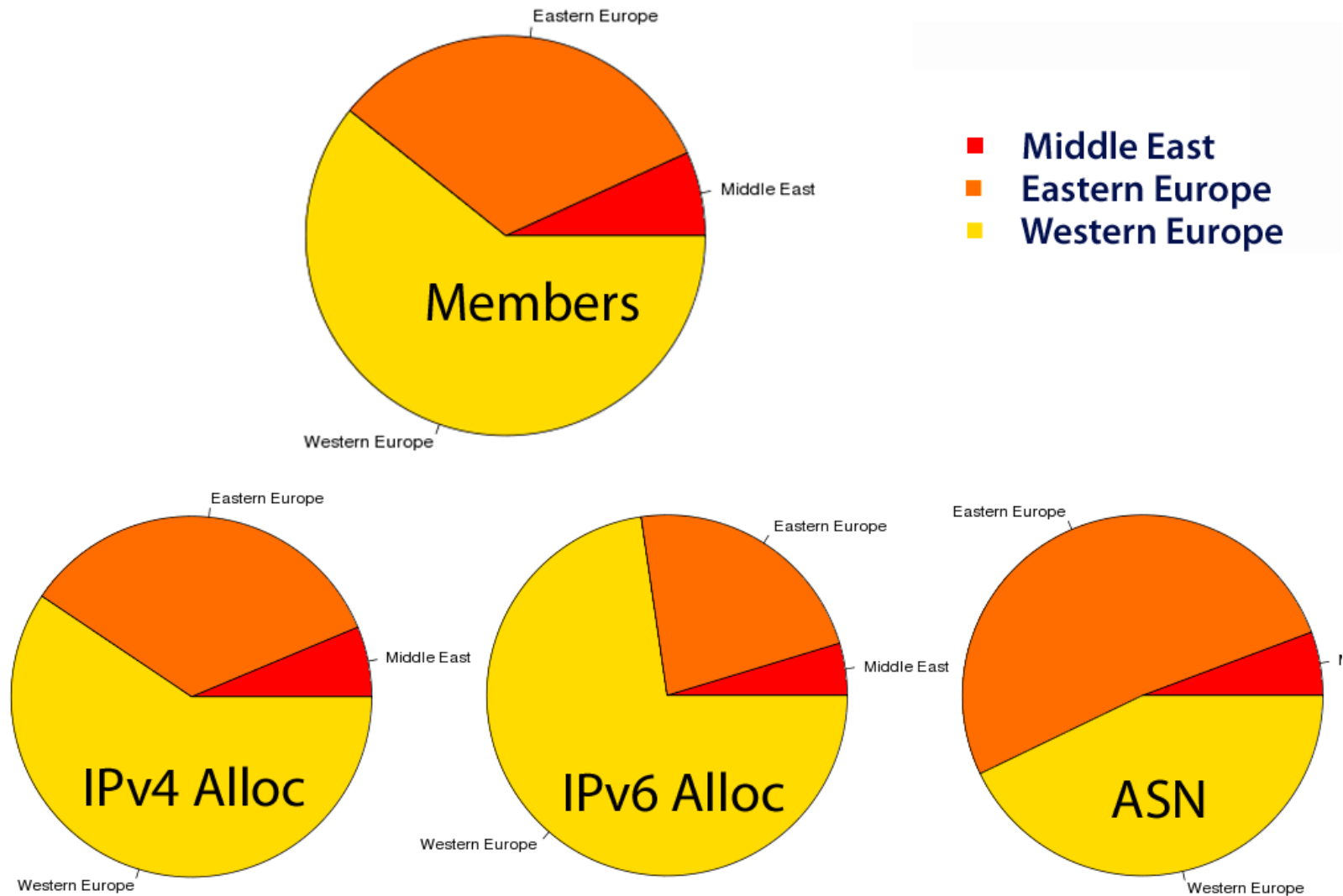


Middle East Membership History

Number of members vs. date of commit - Middle East, 20101001



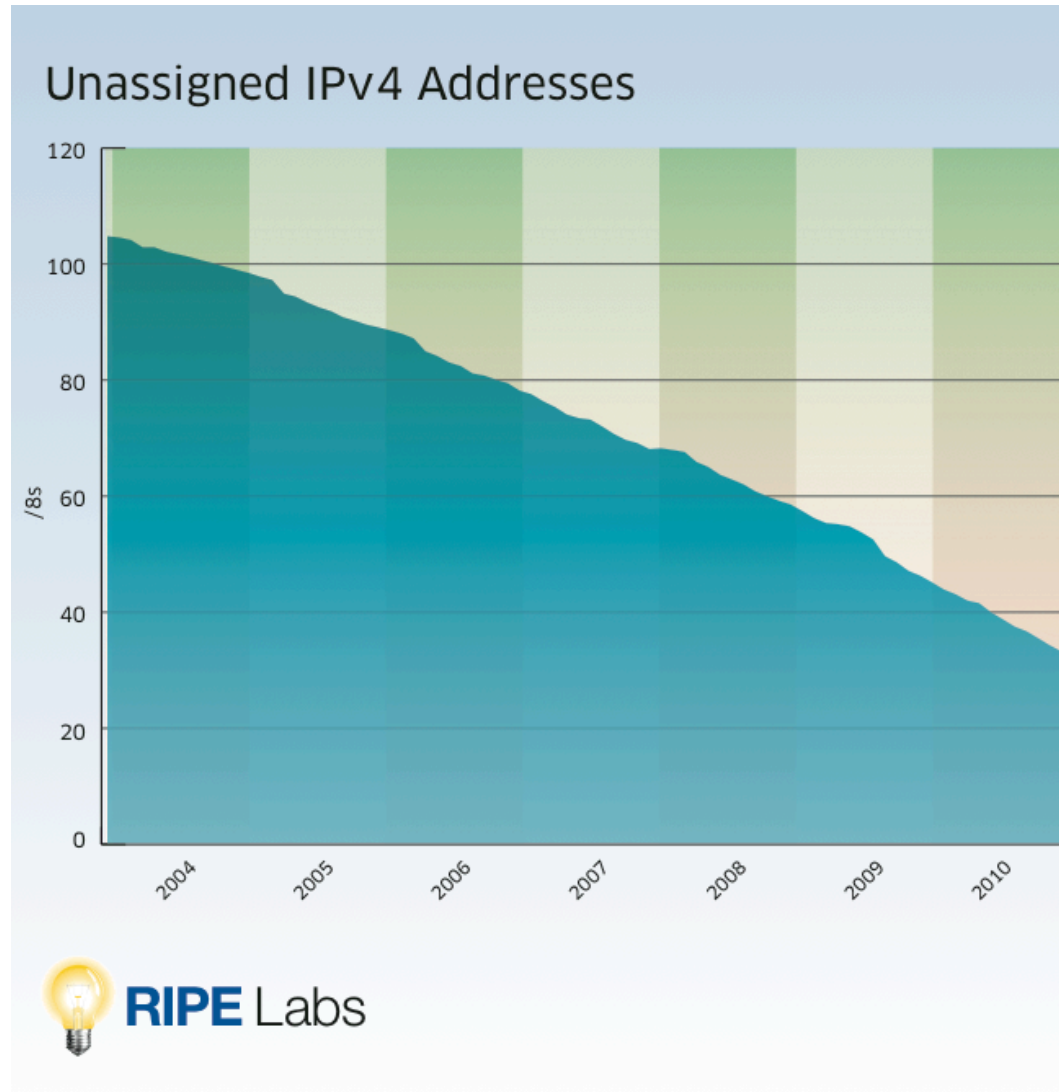
Membership and Number Resources



Number Resources

Elvis Velea will present more statistics about Internet number resources tomorrow.

IPv4 Run-Out: *Graph of the Year*



Predictions

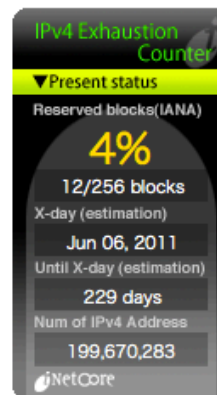


IPv4 Address Report

This report is auto-generated by a daily script. The report you are seeing here was generated at 19-Oct-2010 07:58 UTC.

Projected IANA Unallocated Address Pool Exhaustion: 06-Jun-2011

Projected RIR Unallocated Address Pool Exhaustion: 28-Jan-2012



Predictions

Quick Facts for the impatient

IANA pool depletion date:	2011-04-08 170 Days, 10:33:52
First RIR depletion date:	2011-10-25
All central IPv4 pool depleted:	2012-09-11
Current burnrate in weeks per /8 block:	4.3 wpb
Current burnrate in used /8 per month:	1.00

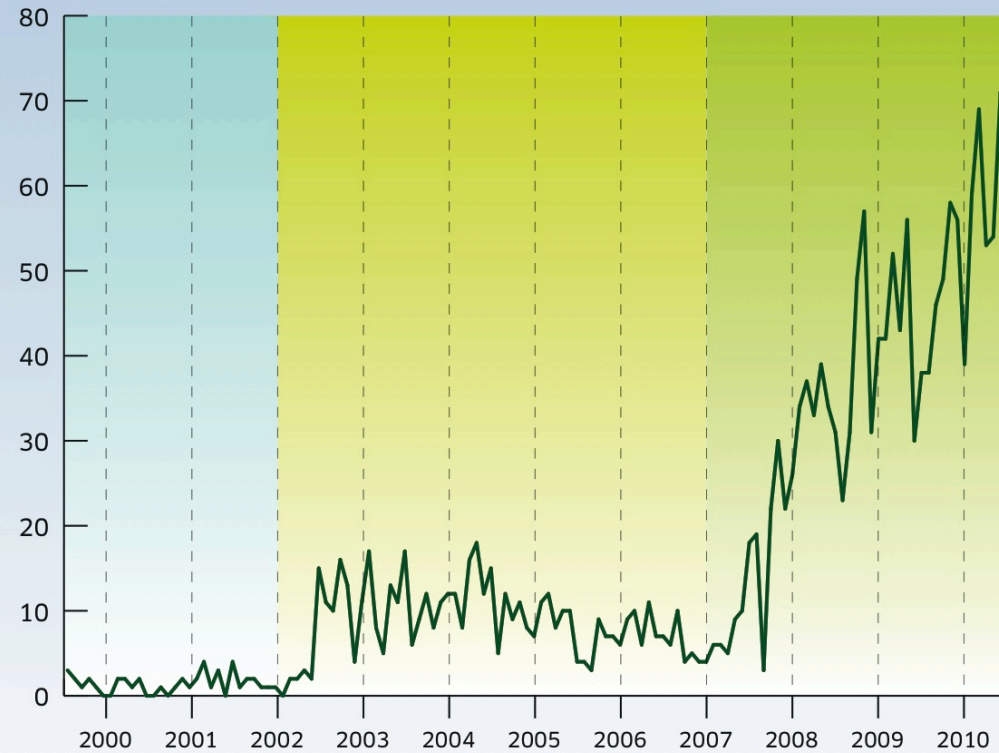
calculations from Tue Oct 19 00:40:03 2010

The Solution: IPv6



V6 Allocations

IPv6 Allocations per Month,
August 1999-July 2010

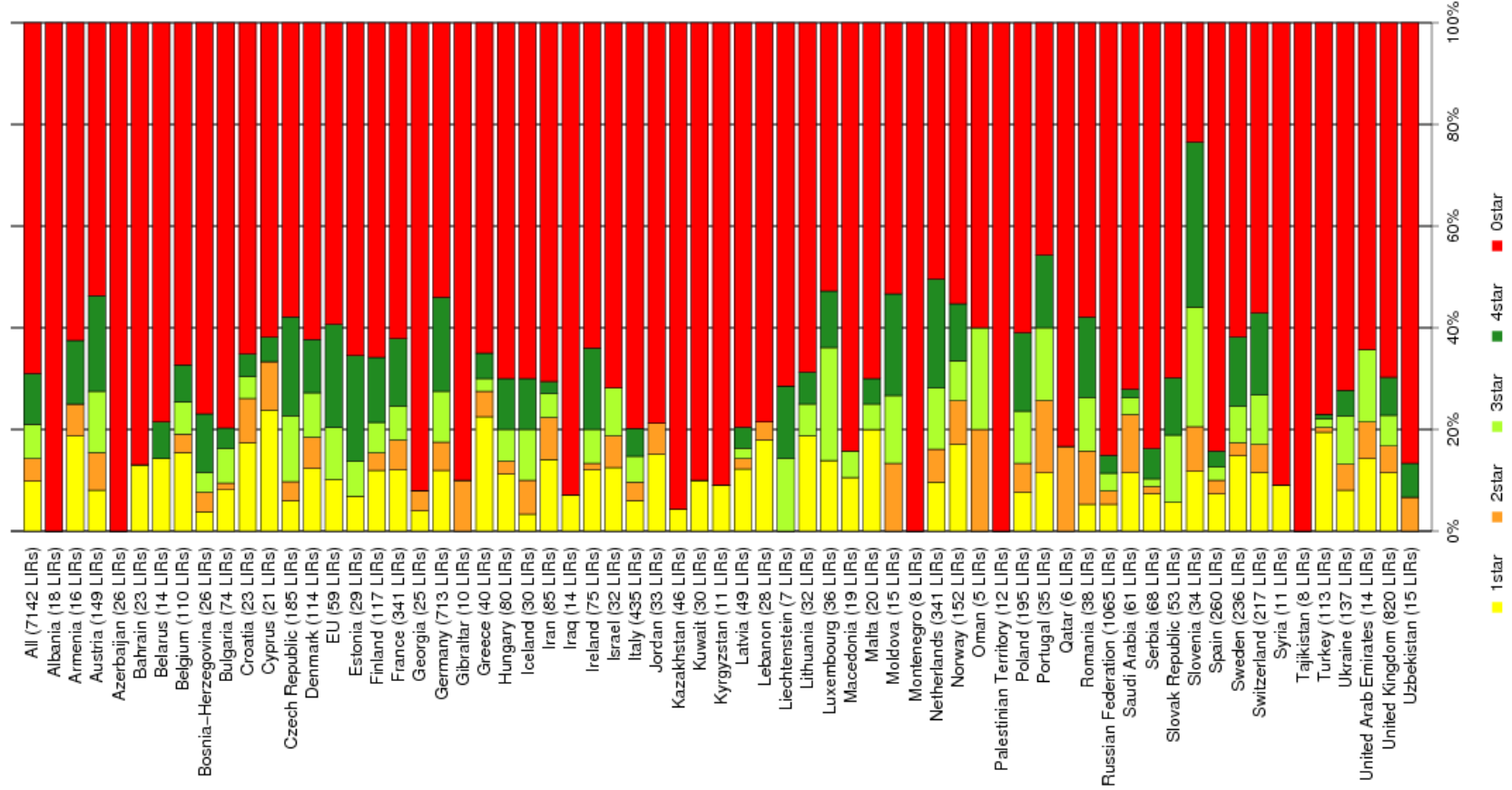


IPv6 RIPEness

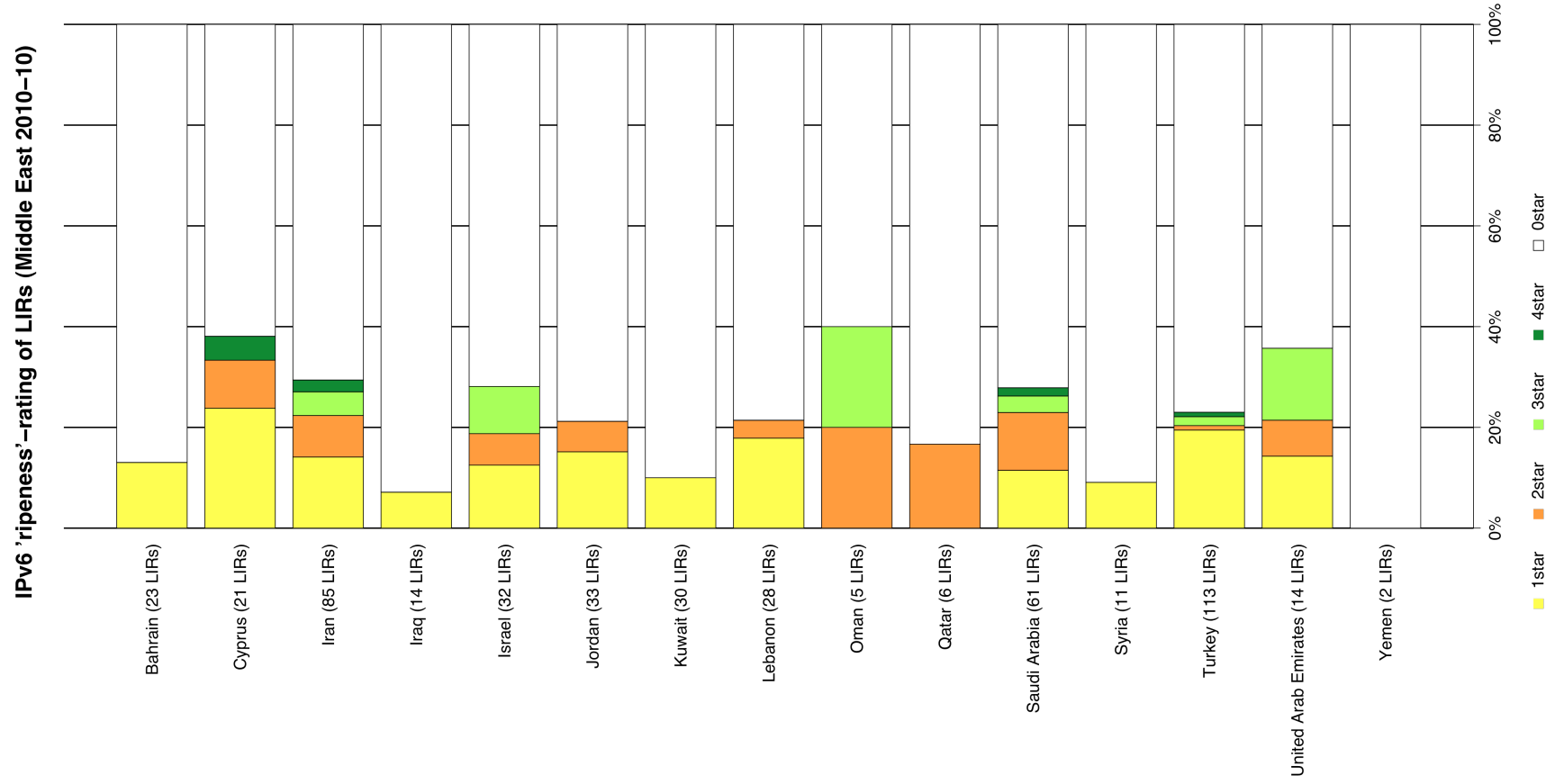
- Methodology:
 - 1* = has received IPv6 address space
 - +1* for reverse DNS
 - +1* for route object in routing registry
 - +1* for route being observed by RIPE NCC RIS
- Fifth Star?
- Actual Deployment ?

IPv6 RIPEness

IPv6 'ripeness'-rating of LIRs per country (2010-10-18)



IPv6 RIPEness Middle East



IPv6 Reality

- It just works
- *Native* Performance is equivalent to IPv4
- I have it @ home as a consumer
 - In August I measured an IPv4-only outage !
- My private rental server in Germany has it
- The RIPE NCC has had it for years
- Study by ISOC UK just appeared on RIPE Labs

- Get it deployed ... *natively* !

Questions?

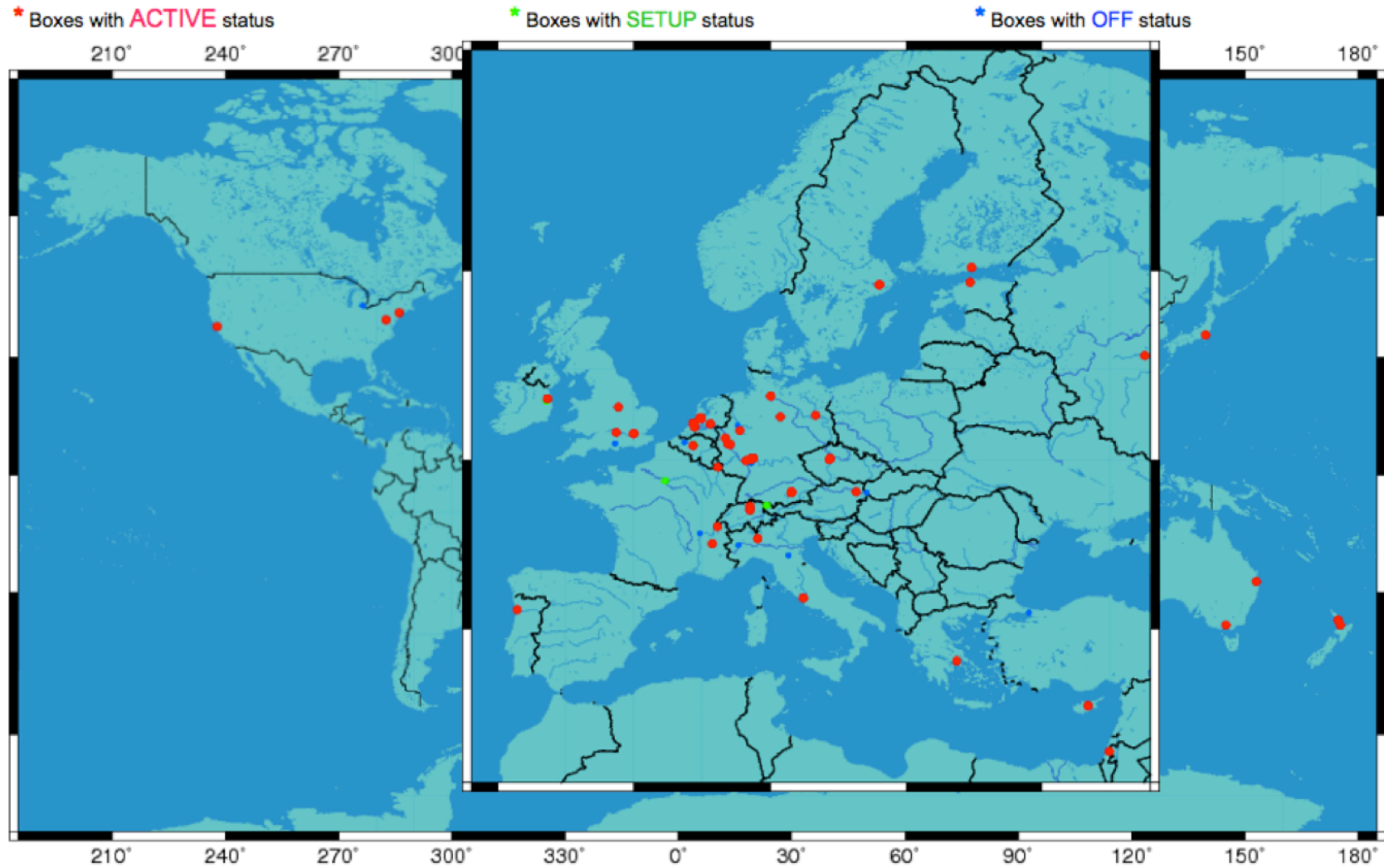


RIPE Atlas



- Sneak Preview of Pilot Announcement Follows

RIPE TTM



Light Map



Intuition -> Plan

- For accurate maps we need more probes
- Deploying very many TTM boxes too expensive
- Smaller probes
- Easily deployable, 24/7 capable



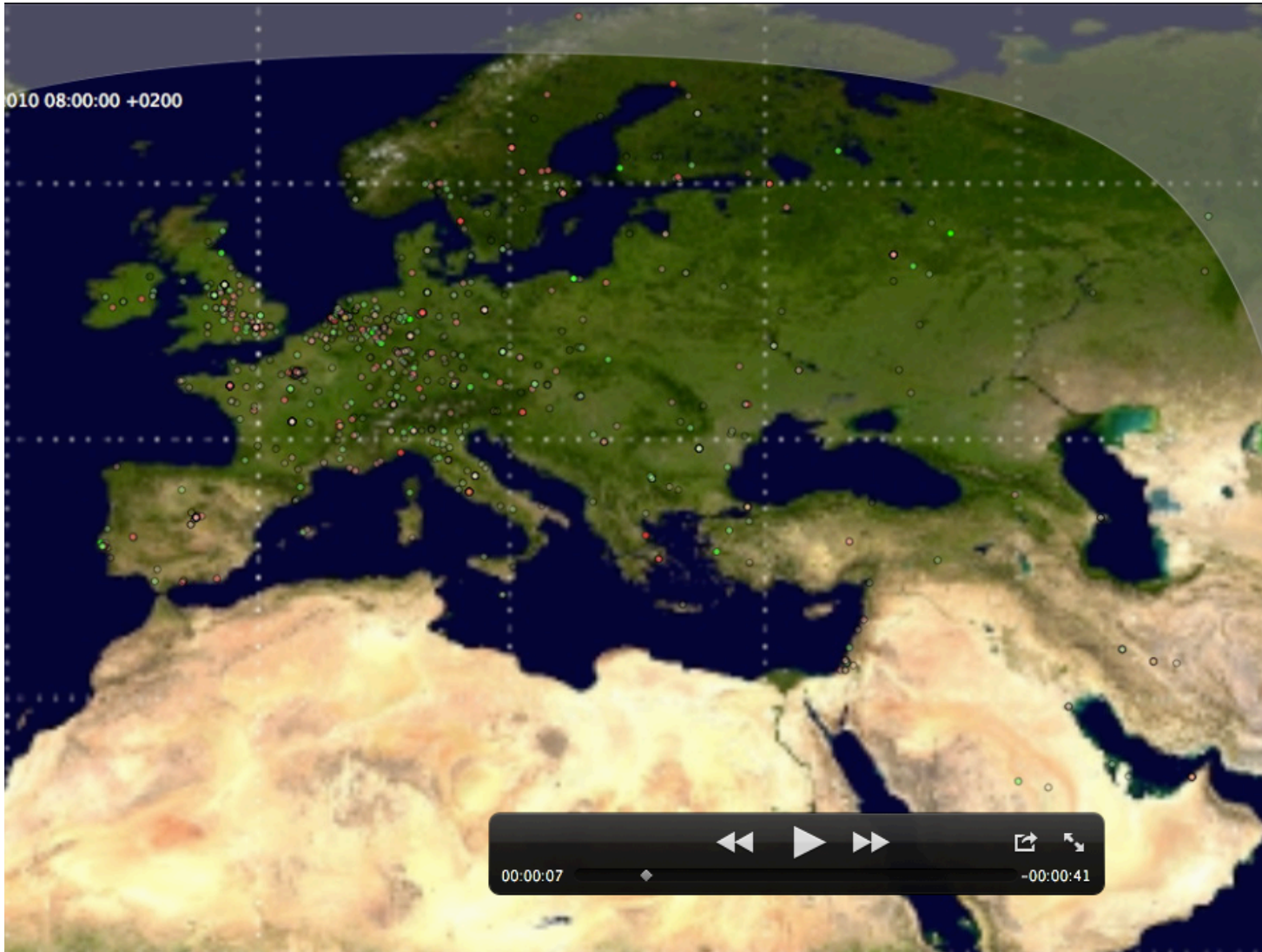
Probe



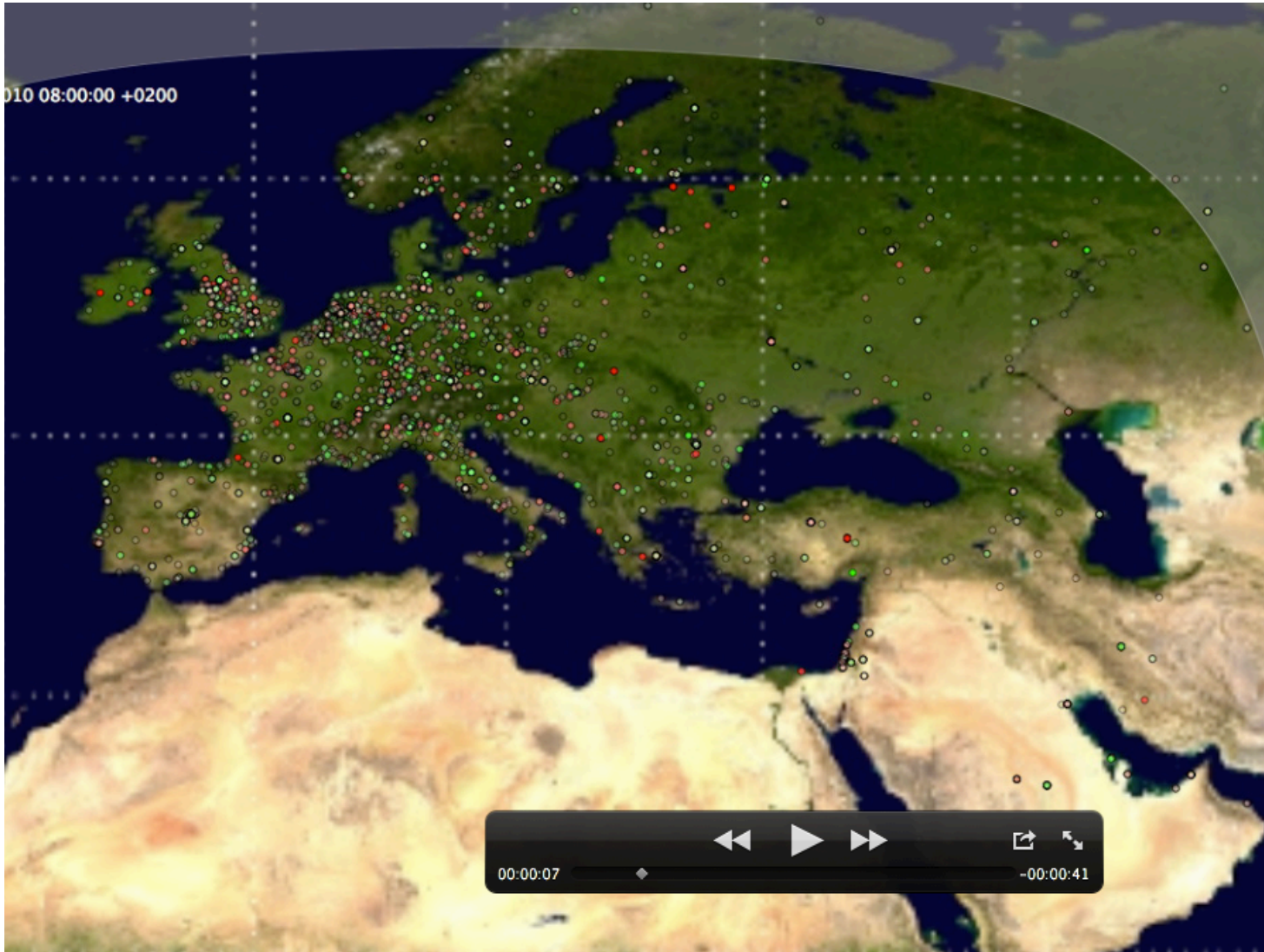
Probe



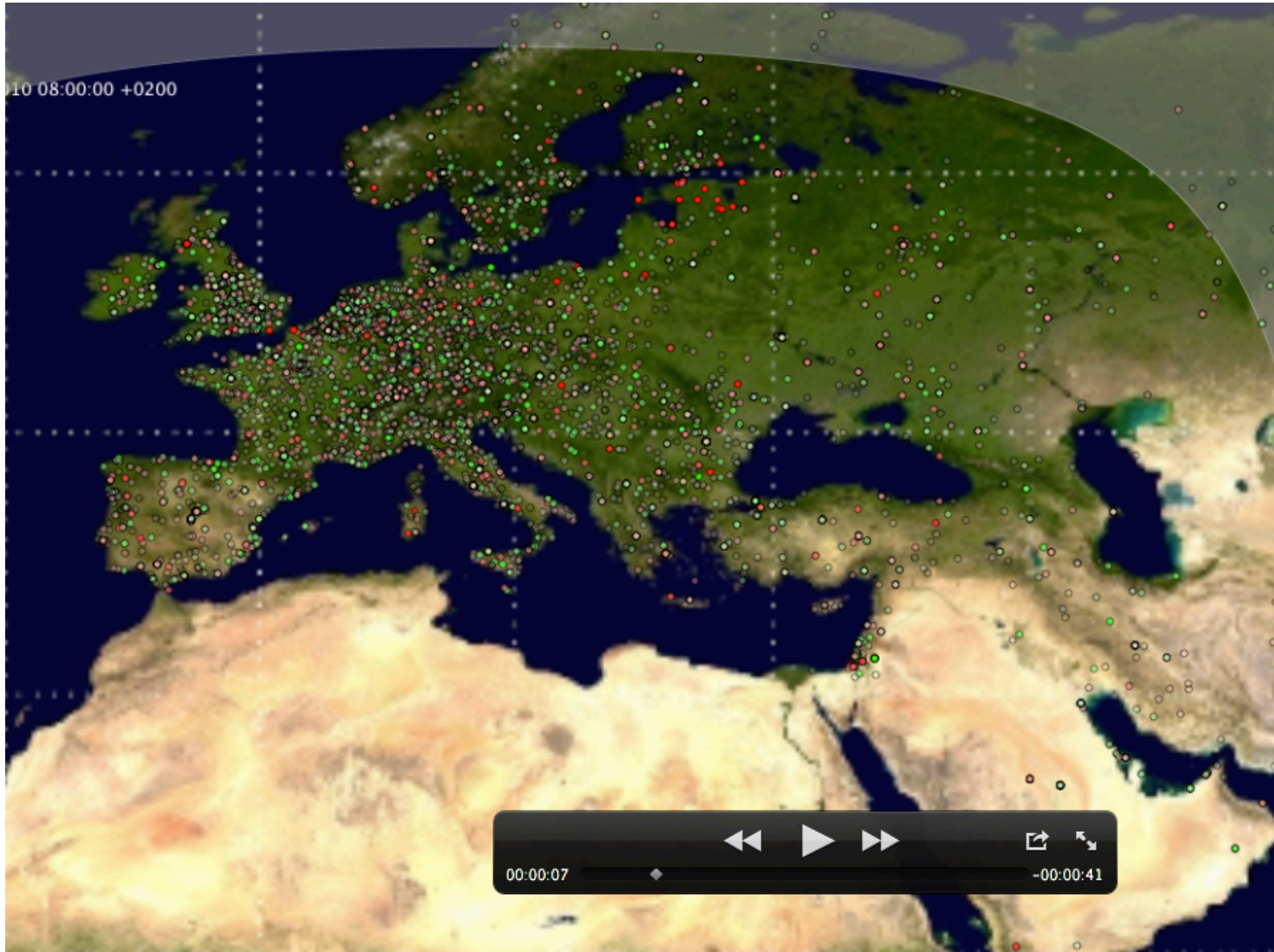
Intuition: 1000 Probes



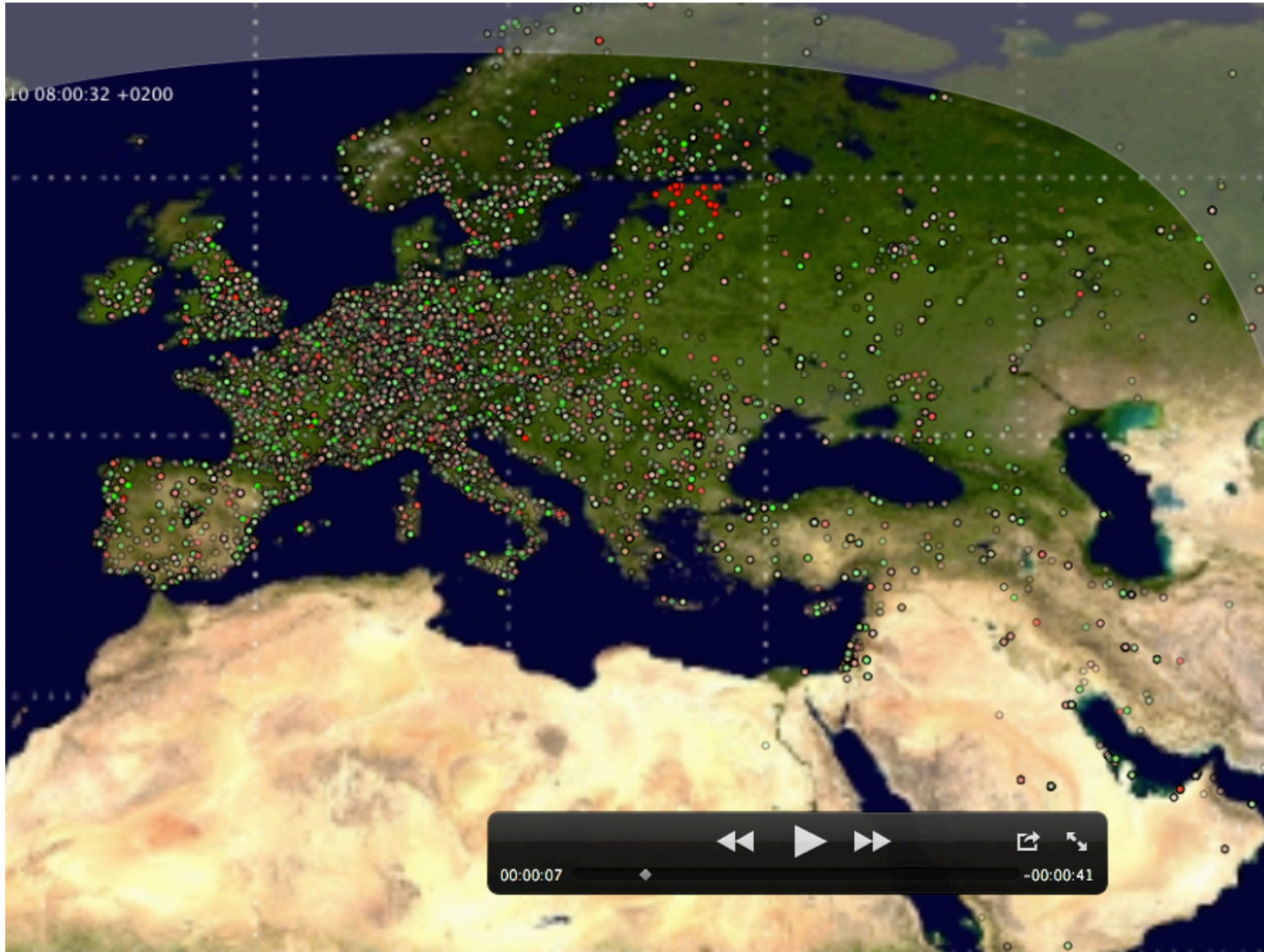
Intuition: 5000 Probes



Intuition: 10k Probes



Intuition: 50k Probes



Hosting = Credits = Measurements

- We cannot “be” everywhere without your help

Become a probe host !

- Donate a fraction of your bandwidth
- Donate a very small amount of electricity

You get:

- Recognition
- Credits = Measurements from all probes (Q2/11)

Hosting = Credits = Measurements

Become a probe host !

Go to labs.ripe.net later today and sign up!

*Get your probe at RIPE meeting in Rome,
or get a friend to pick it up for you there.*

.... or we might send it to you

Hosting = Credits = Measurements

The screenshot shows the RIPE NCC MAPS web interface. The browser address bar displays <http://maps.ripe.net/>. The user is logged in as John, with links for [My Account](#) and [Logout](#). A notification indicates 2460 unused measurement credits, with a link to [how to add more?](#). The navigation menu includes [My Probes](#), [My Measurements](#), [My Results](#), and [Maps](#). Two measurement entries are shown:

Measurement ID	Credits	Type	To	From	When	Start Time	Expiration Time	Status	Actions
Measurement 1	200 credits/hour	ping	1.2.3.4	10 probes in Europe	every 30 min	Mon Sep 06 16:18:21 2010	Wed Sep 08 14:00:00 2010	active	edit remove view results
Measurement 2	600 credits/day	traceroute	www.ripe.net	30 probes around the world	every day	Thu Aug 05 16:18:21 2010	Never	inactive	edit remove view results

Each measurement entry includes a '+ More details' link. An 'Add more' button is located at the bottom right of the measurement list.

Sponsorship = Credits = Measurements

- 50k probes too much for RIPE NCC alone
- Sponsorship Plans:
 - 2K € (2048 EUR) - 8 probes
 - 4K € - 16 probes
 - ...
 - 64K € - 256 probes
- Recognition
- Credits = Measurements from all probes (Q2/11)

Sponsorship = Credits = Measurements

See me later today,

Or contact me <daniel.karrenberg@ripe.net>

Questions?

<http://labs.ripe.net>

